

Fashioning Modernity: Qipao Dresses and Unbound Feet

Dorothy Ko

Paula Zamperini

Bao Mingxin

Carole Turbin



**Figure 4** Early Republican woman in qipao. Collection of Paola Zamperini

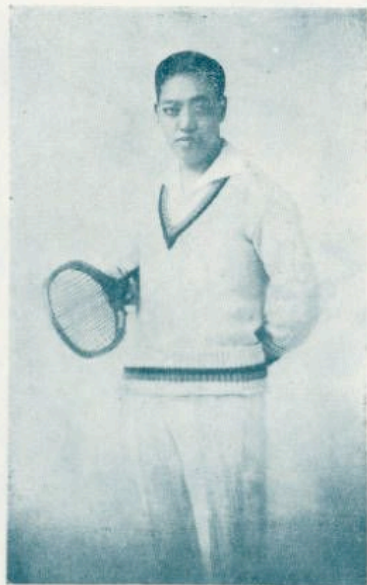


**Figure 3** Late Qing courtesan in Chinese dress and with Western accessories. Collection of Paola Zamperini



△坐者為林君後者為菲島新劇家薛安然君▽

(劉欽瑞贈)



▲良友  
的良友▼

△菲島著名網球家林珠光君▽

# COLGATE'S

芬芳馥郁  
**金頭香水**  
香留衣襟



行滬廠樹路巧國美  
行洋博任商美海上

寫五三六八共中語電第七字B路西江海上



Figure 2 Fashionable man dressed in Western coat and Chinese gown, Collection of Paola Zamperini



A Shoe mender. ca. 1790  
Watercolour and ink on paper

Guangzhou, China

Height 36 cm  
Width 46 cm

Victoria & Albert Museum

See videos on footbinding





中國華東煙草有限公司



祥夫



# 源成順百貨店



投羅寰球  
營市可稱  
第一種貨  
先品



高尚各  
連袂惠顧  
遠意參觀  
任女



特別擴充  
營業起見



內部裝璜  
美觀且廉





# 永備牌

型號	電壓	容量	重量	備註
1	1.5	1.0	1.0	
2	1.5	1.5	1.5	
3	1.5	2.0	2.0	
4	1.5	2.5	2.5	
5	1.5	3.0	3.0	
6	1.5	3.5	3.5	
7	1.5	4.0	4.0	
8	1.5	4.5	4.5	
9	1.5	5.0	5.0	
10	1.5	5.5	5.5	
11	1.5	6.0	6.0	
12	1.5	6.5	6.5	
13	1.5	7.0	7.0	
14	1.5	7.5	7.5	
15	1.5	8.0	8.0	
16	1.5	8.5	8.5	
17	1.5	9.0	9.0	
18	1.5	9.5	9.5	
19	1.5	10.0	10.0	
20	1.5	10.5	10.5	
21	1.5	11.0	11.0	
22	1.5	11.5	11.5	
23	1.5	12.0	12.0	
24	1.5	12.5	12.5	
25	1.5	13.0	13.0	
26	1.5	13.5	13.5	
27	1.5	14.0	14.0	
28	1.5	14.5	14.5	
29	1.5	15.0	15.0	
30	1.5	15.5	15.5	
31	1.5	16.0	16.0	
32	1.5	16.5	16.5	
33	1.5	17.0	17.0	
34	1.5	17.5	17.5	
35	1.5	18.0	18.0	
36	1.5	18.5	18.5	
37	1.5	19.0	19.0	
38	1.5	19.5	19.5	
39	1.5	20.0	20.0	
40	1.5	20.5	20.5	
41	1.5	21.0	21.0	
42	1.5	21.5	21.5	
43	1.5	22.0	22.0	
44	1.5	22.5	22.5	
45	1.5	23.0	23.0	
46	1.5	23.5	23.5	
47	1.5	24.0	24.0	
48	1.5	24.5	24.5	
49	1.5	25.0	25.0	
50	1.5	25.5	25.5	
51	1.5	26.0	26.0	
52	1.5	26.5	26.5	
53	1.5	27.0	27.0	
54	1.5	27.5	27.5	
55	1.5	28.0	28.0	
56	1.5	28.5	28.5	
57	1.5	29.0	29.0	
58	1.5	29.5	29.5	
59	1.5	30.0	30.0	
60	1.5	30.5	30.5	
61	1.5	31.0	31.0	
62	1.5	31.5	31.5	
63	1.5	32.0	32.0	
64	1.5	32.5	32.5	
65	1.5	33.0	33.0	
66	1.5	33.5	33.5	
67	1.5	34.0	34.0	
68	1.5	34.5	34.5	
69	1.5	35.0	35.0	
70	1.5	35.5	35.5	
71	1.5	36.0	36.0	
72	1.5	36.5	36.5	
73	1.5	37.0	37.0	
74	1.5	37.5	37.5	
75	1.5	38.0	38.0	
76	1.5	38.5	38.5	
77	1.5	39.0	39.0	
78	1.5	39.5	39.5	
79	1.5	40.0	40.0	
80	1.5	40.5	40.5	
81	1.5	41.0	41.0	
82	1.5	41.5	41.5	
83	1.5	42.0	42.0	
84	1.5	42.5	42.5	
85	1.5	43.0	43.0	
86	1.5	43.5	43.5	
87	1.5	44.0	44.0	
88	1.5	44.5	44.5	
89	1.5	45.0	45.0	
90	1.5	45.5	45.5	
91	1.5	46.0	46.0	
92	1.5	46.5	46.5	
93	1.5	47.0	47.0	
94	1.5	47.5	47.5	
95	1.5	48.0	48.0	
96	1.5	48.5	48.5	
97	1.5	49.0	49.0	
98	1.5	49.5	49.5	
99	1.5	50.0	50.0	
100	1.5	50.5	50.5	

日英法意特准專賣

亞蘇

亞蘇



蓮  
蜂



