

Modern Women and Consumer Culture: Questions of Presentation and Representation

Francesca dal Lago

Tani Barlow

Xu Hong

*Liang you* 良友 [*The Young Companion*]

日英法意特准專賣

強力殺蟲藥水

亞蘇



元壽發外海  
 社會式株産物井三  
 元造製  
 所藥製村木  
 會株  
 社式

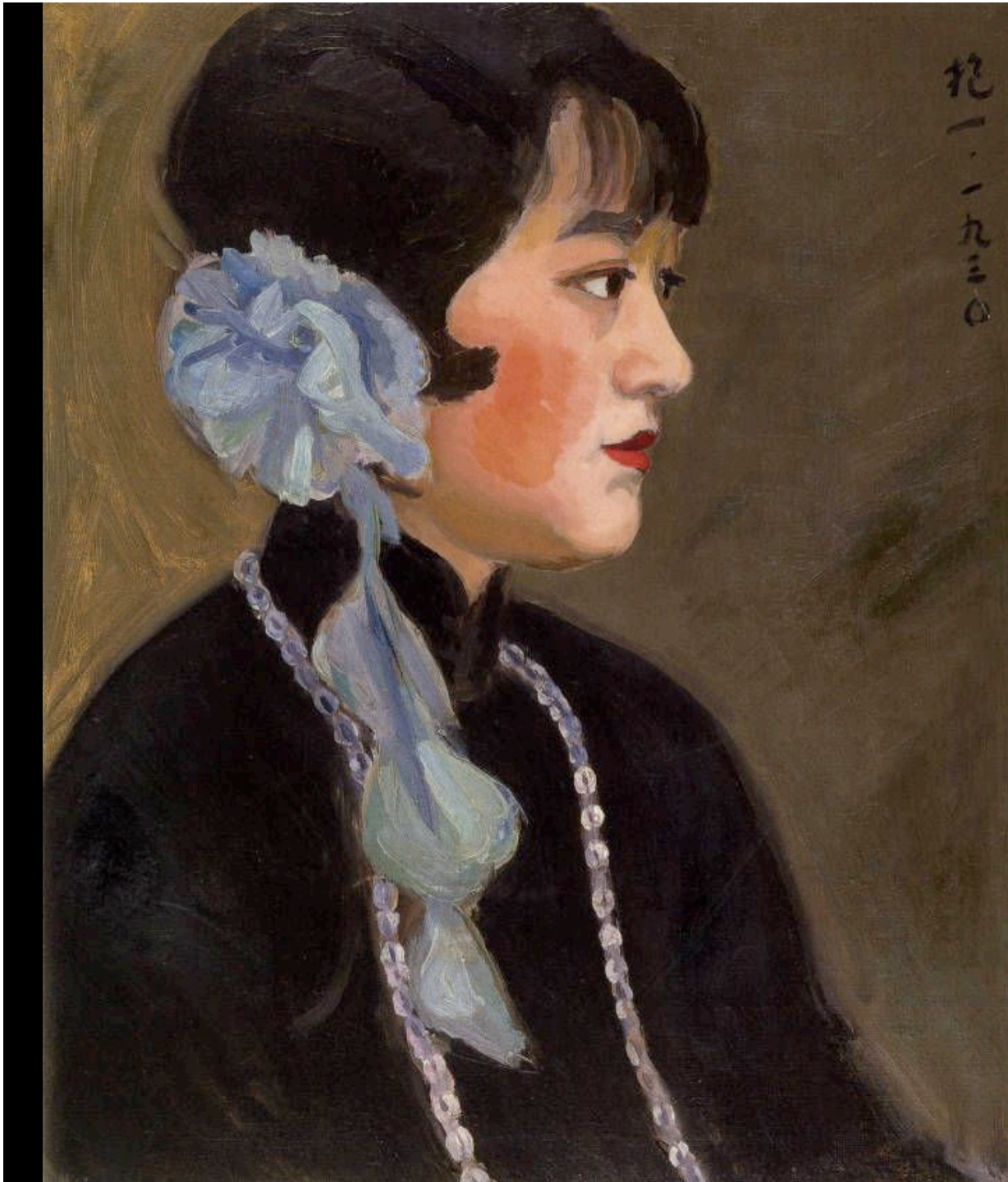




Guan Zilan's salon



Portrait of Guan Zilan



Chen Baoyi. *Portrait of Guan Zilan*. 1930. Oil on canvas; 73 x 60.5 cm. National Art Museum of China, Beijing (*Shanghai Modern*)



Guan Zilan (1903-1986).  
*Portrait of Miss L.* 1929. Oil on  
canvas; 90 x 75 cm  
Chinese National Art Gallery,  
Beijing

*Liang You.* Painting by Guan Zilan  
in upper right corner.





GUAN ZILAN [Kuan Chilan]  
[Violet Kwan] [Chinese artist,  
1903-1986]. *Puberty*. 1941.  
Oil on canvas; 76.5 x 65.5 cm.  
Private collection.



Pan Yuliang [front, left] with eminent members of Shanghai literary and artistic circles. 1930. Photograph; 10.7 x 15.2 cm. Shanghai History Museum



PAN YULIANG [Chinese artist, 1895-1977]. *Self Portrait*. 1945. Oil on canvas; 73.5 x 60 cm. National Art Museum of China, Beijing