



Hawker. 1938. Ink and color on paper; 32 x 37 cm. HKMA.

A Pioneer of Modern Chinese Painting: The Art of Lin Fengmian

4 Apr - 3 Jun 2007 Special Exhibition Gallery(1), 2/F, Hong Kong Museum of Art Jointly presented by the Leisure and Cultural Services Department and the [Shanghai Art Museum](#) Jointly organized by the Hong Kong Museum of Art and the [Shanghai Art Museum](#)



Lady. 1947.
Ink and color
On paper; 65 x 68 cm.
Shanghai Art Museum.



Reclining Nude.
1952. Ink and color
On paper; 33.5 x 34.7
cm. HKMA.



Opera Scene.
1950s. Ink and color
On paper;
66.2 x 66 cm.
HKMA.



Blooming Flowers.
1979. Ink and color
on paper; 67.8 x 67.8
cm. Private Collection.



Chinese Opera: The War of Red Cliff. 1985. Ink and color on paper; 83.4 x 151.5 cm. Private Collection.



Dawn. 1985. Ink and color on paper; 67.2 x 132.4 cm. Private Collection.



Crows. 1960.
Ink and color on paper;
69.2 x 69.3 cm.
Private Collection.

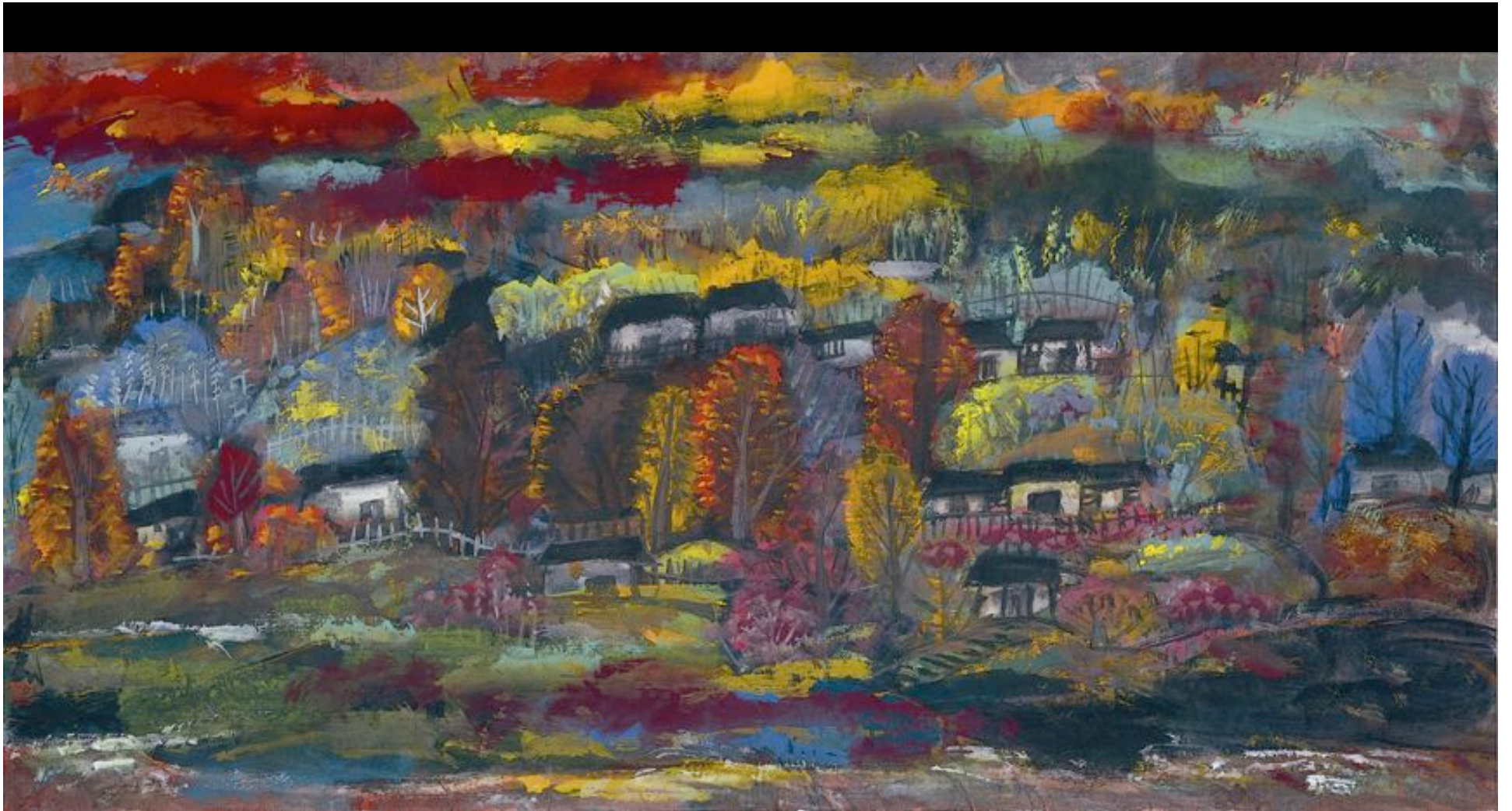


Nightmare: The Great Sparrow Campaign. 1977-78.
Ink and color on paper; 69 x 69.3 cm.
Private Collection.

Late 1950s Great Sparrow Campaign in China; birds unable to land, drop exhausted from sky



Autumn Landscape.
1977-78. Ink and color on
paper; 67.8 x 68 cm.
HKMA



Village. Early 1980s. Ink and color on paper; 67.4 x 131.8 cm. Private Collection.



All the World is a Stage. Late 1980s. Ink and Color on paper; 69 x 69 cm. Private Collection.



Lady with fruit.
1960s. Ink and color
On paper; 68 x 67 cm.
Shanghai Art
Museum.



Still Life. 1987.
Ink and color on
Paper; 67.8 x 66.6
cm. Private Collection.



Suffering. 1989. Ink and color on paper; 83.2 x 151.2 cm.
Private Collection.