

Decide if you want to use Dreamweaver

- less buggy,
- professional quality
- offers split screen viewing of code and layout
- must be used on a Reed Computer
- online help with video
- costs \$199 if you aren't at Reed

of NVu

- crashes occasionally
- doesn't use templates as effectively
- displays either code or layout but not both
- wiki site for help
- free

Log onto the computer as yourself and do 1 - 5 **quickly**, this is just for practice.

1. Choose a partner and introduce yourself !
2. Choose an animal behavior
3. Download one image of your animal behavior from the web (save it on the desktop).
4. Surf the web to find one site related to your animal behavior. write down the url:
5. From the Reed library website, find one paper related to your animal behavior and download this to your desktop
6. Create a word document that has 2 - 3 sentences for your website

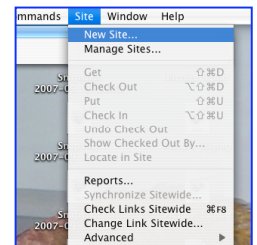
**Now you are ready to START**

7. see the available templates

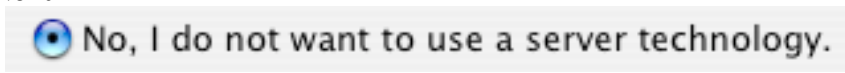
<http://academic.reed.edu/biology/courses/bio342f06/templates.html>

if you will want more than 5 pages use template A.

8. Download and unzip your preferred template onto the desktop.
9. Change the folder name to your initials (e.g. scpr\_site) (use\_no\_spaces\_no\_caps)
10. Open dreamweaver select **New Site** from the **Site** menu
11. Name your site (use\_no\_spaces\_no\_caps)  
do not enter a URL and  
click **Next**



12. Select

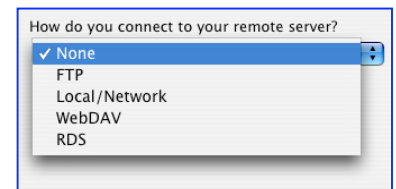


click **Next**

13. Specify the name of your website folder on the desktop by clicking on the folder button and navigating to your folder.  
click **Next**

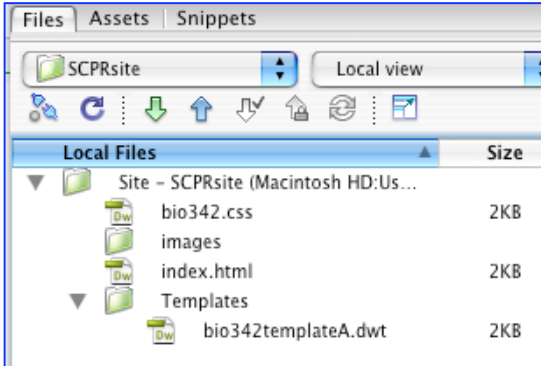


14. For now chose None as the option for connecting to your remote server.  
click **Next** and **Done**.



**Each time you work on your website on campus you will need to repeat steps 9-13 after dragging your site folder from your home server to the desktop. Be sure to replace your site folder to your home server at the end of each work session.**

15. You now will see the contents of your folder listed in the **Files panel** to the right of the screen. (you may need to adjust the width to see it all and click the arrows to expand folders to see their content.)



The bio342.css file is where you specify text fonts and colors.

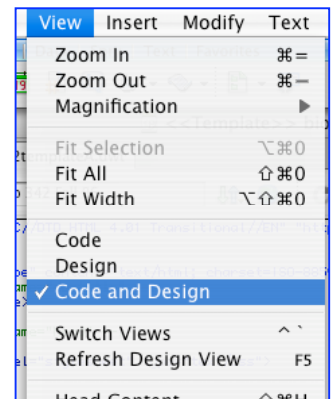
The index.html file will be your home page

The bio342templateA.dwt is the template for your home page and will be used to create new pages.

While it might seem cumbersome at first, using **\*.css file** and a **template** will greatly increase the efficiency of updating files and help to maintain a uniform look to your website.

16. open all three of these files by double clicking on the 3 icons in the **Files panel** tab.

17. From the **View** menu **select Code and Design** and adjust the divider so that you can see most of your design and some of your code when you are looking at the template of index files. (The \*.css file is all code). currently the \*.css file (Cascading Style Sheet) specifies some rather boring styles.



### WORKING IN THE \*.css FILE

18. All changes that you make to the .css file will be propagated to all web pages that are linked to this file (i.e. anything linked to your template page that is linked to the .css file).

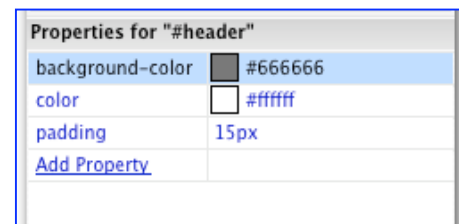
19. when you see the gray text `/* Don't change this */` it means to NOT change the text on that line.

20. Change the color of the header

- find the text

```

/*-----*/
/* The header at the top of the page */
/*-----*/
#header {
    background-color: #666666;
    color: #ffffff;
    padding: 15px;
}
    
```



- click in this text and the Properties panel will display the color information for the header.
- click on the color swatch and the color picker palette will appear. The code for the selected color will replace the current gray color codes.

Go to your index.html or template and observe the effect.

21. Use the above strategy to alter the text color, font size, hover color etc for the left navigation by changing the \*.css file text under the header.

```
/*-----*/  
/* The navigation bar on the left */  
/*-----*/
```

22. Again use the same strategy to alter the text color, font size, etc for the headers and text that will appear in the main content of your website.

23. Additional headers can be added here also.

- Copy an existing one from # to }
- paste it below.
- Then change the name(s) (the dual names are not necessary).

24. Enough for now but this is where additions should be made if they are to be propagated throughout the website. For example:

- Border colors can be set.
- Link colors can be changed
- List properties can be created.

### WORKING WITH THE TEMPLATE

25. All changes that you make in the template file (outside of the editable areas) will automatically be propagated to all web pages built off of this template.

26. Update the year to 2007 rather than 2006 by typing in the Design Window.

- Notice that as you type in the design window the code above is automatically updated.

27. Add an informative title rather than "Title Here".

- This should be the Title of your entire website. This text will appear on every page in your website.

28. Add the authors names to the header.

- After the Year, type return and then your name
- Notice the font
- Notice the code.

```
<h2>Biology 342 Fall 07</h2>
```

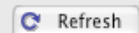
```
<p>Author: Suzy Renn</p></td>
```

- Working in the code, use cut and paste to change the code so that the author name is inside the h2 tag.

```
<h2>Biology 342 Fall 07 <p>Author: Suzy Renn</p></h2>
```

- When changes are made in the code view the CSS style panel will appear and you must click the Refresh button.
- Notice how this changes the font
- To use single line spacing rather than double spacing

You have made changes to the code. To update the CSS panel or edit CSS properties, click Refresh or press F5.

 Refresh

(paragraph break) while working in the Design Window, Go back and Delete the author name and this time hold down the **shift** key when you hit return before typing the author name.

- Notice the difference in the code in the Code Window (<br> instead of <p>)  
**<h2>Biology 342 Fall 07<br>**  
**Author: Suzy Renn</h2>**

- 29. Change the link to "Adaptation" to be "Adaptive Value" so as to avoid confusion.  
 Again, this can be done in either the Code View or the Design view.

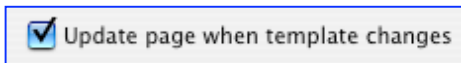
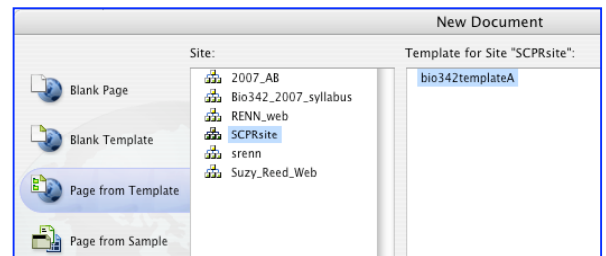
- 30. The required five links have been made for you. The pages you create (below) must have these names or these links will not work. To add more than the required 5 pages this is where you can create additional link(s) by copying one line and pasting it below and changing both the text to appear on the link and the name of the .html file that will be created for the corresponding page.

```
<li><a href="../index.html">Home</a></li>
<li><a href="../phylogeny.html">Phylogeny</a></li>
<li><a href="../ontogeny.html">Ontogeny</a></li>
<li><a href="../mechanism.html">Mechanism</a></li>
<li><a href="../adaptation.html">Adaptative value</a></li>
<li><a href="../references.html">References</a></li>
```

- 31. It is possible to use multiple templates in a single website (not today).
- 32. It is possible to add additional content boxes (not today).

### CREATING NEW PAGES

- 33. Create 5 new pages (index.html will be the home page for your site) These must have the file name (s) that are specified on the template page.
- 34. From the File menu, select New
- 35. Select **Page from Template**
- 36. Highlight your own site (here SCPRsite).
- 37. Select the correct template (bio342templateA).
- 38. Check the box to automatically update each page when the template is changed.

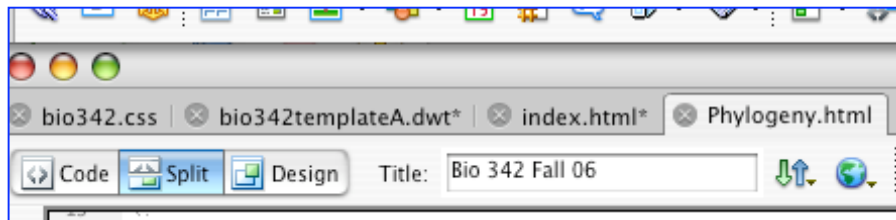


- 39. Click the **Create** button.
- 40. The first thing to do is to save the untitled document that has appeared.
- 41. From the **File** menu select **Save As**
- 42. Check that it will be saved in your **site root**.
- 43. Name the file to match the file names specified for the links in the template file. Capitalization is important.
- 44. **It is good practice to use no spaces, no capital letters, and short file names.**
- 45. Notice that on these new pages can only change text in the content box. It is a good idea to close your template file when you are not working on it so that you do not accidentally change it.

## ADDING HEAD TAG INFORMATION

Head Tags, such as Key Words and Description are used by search engines and can help users to find your site efficiently. Head Tags added to the template page will propagate through all linked pages. Head Tags added to individual web pages will be specific to those web pages. Adding Head Tags to individual web pages will add to the Head Tags, not replace the Head Tags specified by the template.

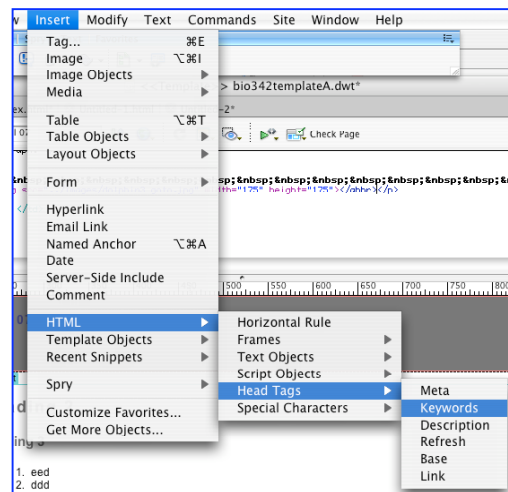
46. The web page title will be displayed as the primary line returned by a search engine such as Google, therefore an informative title will be useful. The current title that is brought in with the template is not informative.
  - At the top of your page delete the text Bio 342 Fall 06 and enter a useful title.



- Notice that your new text appears in the code near the top of your page  
`<title>phylogeny of stickleback mating behavior</title>`

47. The web page **Keywords** are searched by search engines though they are not displayed in the web browser.

- Good Keywords include, common misspelling of your name of the species name, related topics, names of prominent researchers in the field, taxonomic descriptions of your organism etc.
- From the **Insert** menu select **HTM/Head Tags/Keywords**
- Enter appropriate keywords and click **OK**.
- You can always add more keywords to each website either using the above instructions or by typing directly in the code with in the parentheses at  
`<meta name="keywords" content="susie wren susy susan ">`

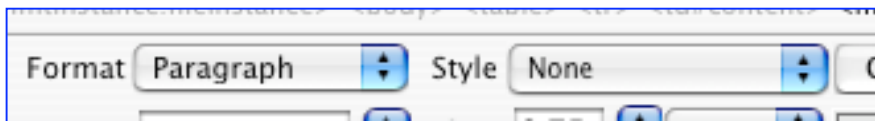


48. The web page **Description** is also used by search engines and may be informative to potential readers. This is often the text that shows up underneath the web page Title in the Google search results.

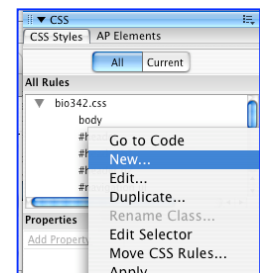
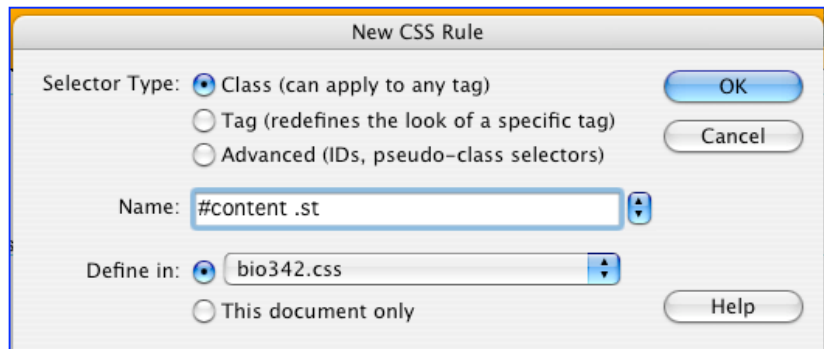
- Good Descriptions include short descriptive phrases.
- From the **Insert** menu select **HTM/Head Tags/Description**
- Enter appropriate text and click **OK**.
- Notice that the description text appears within a meta tag in similar format to the keywords above.  
`<meta name="description" content="description of suzy's webpage">`

## ADDING TEXT CONTENT TO INDIVIDUAL PAGES

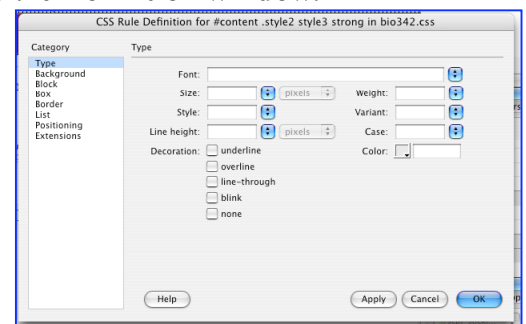
1. To add text to individual web pages type the desired text directly in the Design View.
  - Text can also be added using copy/paste function from word, text pad, .pdf files, other websites etc, but some formatting may be lost and some retained.
  - It is advisable to use the **Edit** menu and **Paste Special** and then format your text within Dreamweaver.
  - Text copied from other files in Dreamweaver should retain the associated formatting.
2. The text style can be specified to be any of the style class described in the .css file for that editable section.
  - The Header 1-6 styles can be accessed from the Format button
  - Any Custom class style can be accessed from the Style button



3. To specify a new class style **right click** in the **CSS Styles Panel** and select **New**.
4. The New CSS Rule window will appear



5. Select **Advanced** (IDs, pseudo-class selectors)
6. Name your style class
  - the #content specifies which editable section the class will apply to.
  - the .st is the class that will appear as a tag in the code. (not the "." is important the letters can be anything)
7. If the style should be applicable to all pages on your website select Define in: the .css file related to this website.
8. This will open a window in which you can specify the new rules and name your style. (Also here, you can choose to add this style to the linked .css file or apply it only the the current page.) Clicking **OK** will bring up the **Definition window**.
  - Go look at your .css file and see how it is coded.
  - The new style will now appear on the pop-up style menu



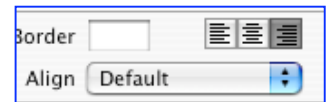
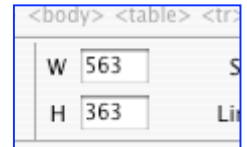
### ADDING IMAGES TO INDIVIDUAL PAGES

1. In Photoshop reduce the resolution to 72 dpi (web browsers do not have higher resolution so there is no reason to use larger files that will only slow web browsers)
2. Save all images as **.jpg** files in your images file in your site file with short informative names that contain no spaces and no capital letters. (use .gif files for line art or simple 2 color images)
3. To place the image on the individual website:
  - Either drag and drop them into place from the **File** panel.

OR

- From the **Insert** menu choose **Image** and navigate to the image file. If it is not already in your images files within your site file you will be prompted to save a copy of it in your site folder
  - a. **Note images will automatically go into the root folder not the images folder unless you specify so, but from the site manager panel within Dreamweaver you can drag the image into the images files and the code will automatically update. If you move website images and other files in Finder outside of Dreamweaver the code will not update and your links will be broken.**

4. You will be prompted to add alternate text.
  - This text would appear on a browser that does not show images. It is useful to give a short description of the image.
5. While it is possible to resize image sizes in Dreamweaver using the dimension settings in the image formatting palette while the image is selected, it is best to do this in Photoshop before inserting the image.
6. To position the image and wrap the text use the **Align** buttons and options
7. Using these same steps, images can be placed in non-editable regions of the template file to be propagated to all linked web pages.



### INSERTING NAMED ANCHORS

Named Anchors specify a particular place in a webdocument. These are useful for navigating within or between documents when you want to direct the reader to a specific point in a large document.

1. In the Document window's Design view, place the insertion point where you want the named anchor.
2. Do one of the following:
  - Use the short cut button that looks like an anchor.
  - From the **Insert** menu choose **Named Anchor**.
3. The Anchor Name box will appear.
  - Type a name for the anchor,
  - and click **OK**.
  - (The anchor name CANNOT contain spaces).
4. The anchor marker appears at the insertion point.



## INSERTING HYPERLINKS

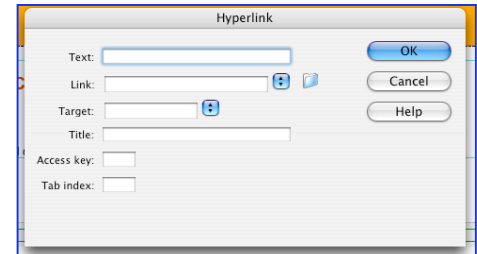
Hyperlinks let you create a text link to a particular location in the current document (using Named Anchors as above) or to link to another web document either within your website or outside.

1. Place the cursor in the document where you want the link to appear (or highlight the text to serve as the link).
2. from the **Insert** menu choose **Hyperlink**.

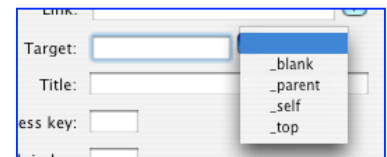


OR

3. Click on the **Hyperlink** button (looks like a chain link) in the common tools
4. The Hyperlink box will appear
5. Enter the text of the link after Link  
(or if you highlighted text it will appear in that space)
6. Enter the name of the file to link to  
(or click the folder icon to browse to the file).
7. In the Target pop-up menu, select the window in which the file should open or type its name.



- `_blank` : new browser window. (good for linking to outside sites without losing your reader)
  - `_self` : loads in same browser (best if you are moving within your own site)
8. Click OK.



To link to a Named Anchor

1. In the Document window's Design view, select text or an image to create a link from.
2. Click on the Hyperlink button (looks like a chain link)
3. In the Link box of the Property inspector, type a number sign (#) and the name of the anchor. For example:
  - To link to an anchor named "top" in the current document, type `#top`.
  - To link to an anchor named "top" in a different document in the same folder, type `filename.html#top`.

## WORKING WITH TABLES

Tables are a powerful tool for presenting tabular data and for laying out text and graphics on an HTML page. A table consists of one or more rows; each row consists of one or more cells. Although columns aren't usually explicitly specified in HTML code, Dreamweaver enables you to manipulate columns as well as rows and cells.

Cells within a table can be merged or split to offer flexibility in layout.